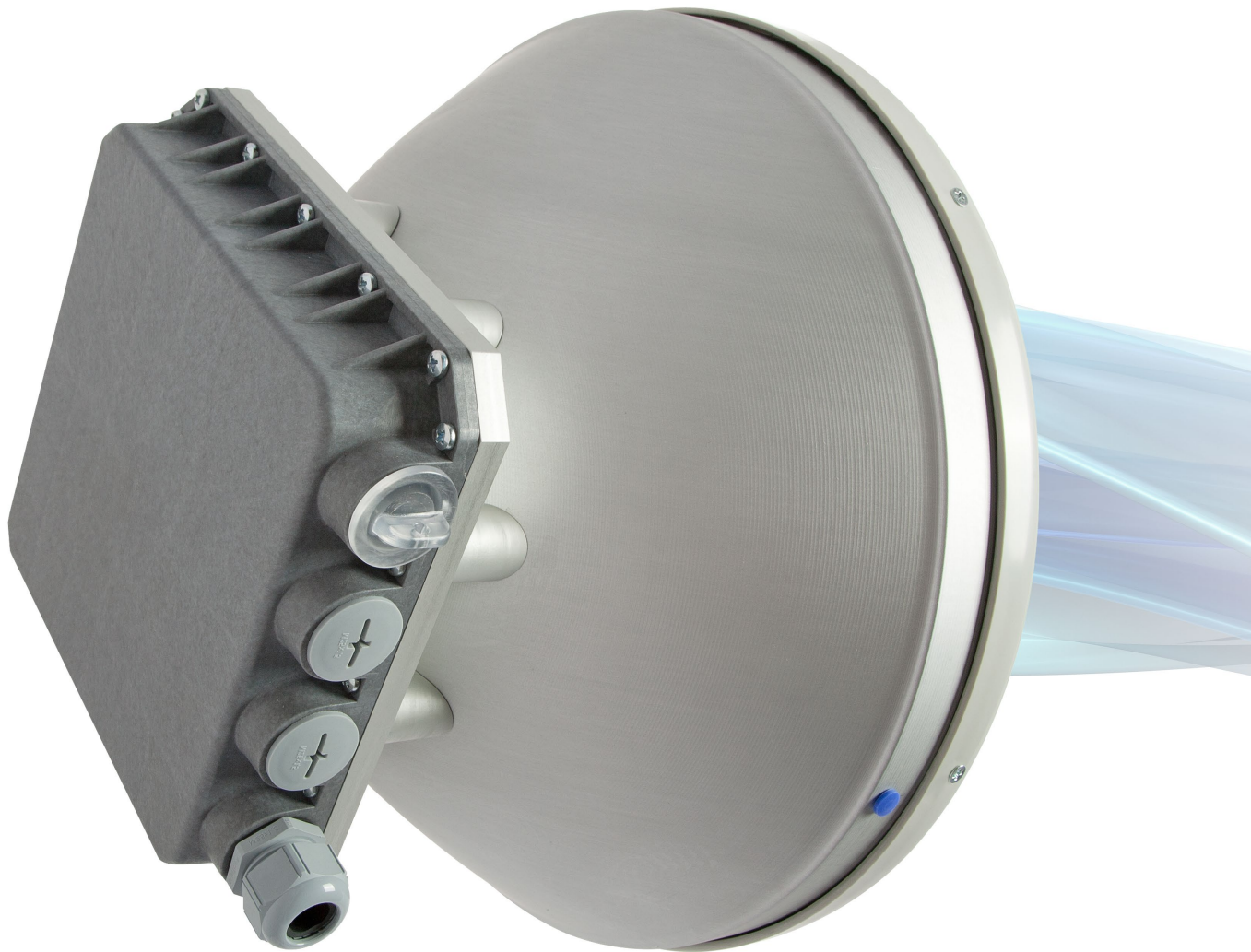




Integra

integrated carrier-grade microwave radio,
delivering up to 1Gbps Full Duplex



- SAF's most powerful modem yet with 3.5MHz to 60MHz channel bandwidth and up to 1024QAM modulation support for universal network upgrades in a compact integrated design
- All-Outdoor radio includes radio, modem, Ethernet network processor, PoE splitter with surge arrestor and integrated antenna in a single hardware design
- Direct radio and antenna integration guarantees weather-proof factory sealing and fast installation
- Carefully selected materials for best corrosion resistance and simplified installation with a 50% weight reduction compared to other microwave systems



Integra is an unbelievably light, energy efficient carrier-grade system that exemplifies an outstanding return on smart engineering - the synergy of high competence in radio electronics and materials science. Integration of next generation microwave radio with high and super high performance antennas into a single unit. It translates into a lower total cost of ownership, as well as less time spent on the installation site, and better reliability of the link even in densely served areas.

Capacity	up to 1Gbps throughput with header compression*
Frequency bands	15GHz, 17GHz UL, 18GHz, 23GHz, 24GHz UL, 38GHz, 42GHz and more*
Modulation	4QAM / 16QAM / 32QAM / 64QAM / 128QAM / 256QAM / 512QAM / 1024QAM / Hitless ACM
Channel bandwidth	
ETSI	from 3.5MHz up to 56MHz, up to 456 Mbps
FCC	from 5MHz up to 60MHz, up to 474 Mbps
Gigabit Ethernet	
1x RJx45	Electrical with built-in PoE splitter and surge arrestor
2x SFP	Fibre Optics
Service ports	
3.5mm	Audible alignment and RSSI
USB B-Type	Terminal Access
LED	Power On, Link Synchronization, RSL
Managed Gigabit Switch functionality	802.1Q VLANs with QoS including WRED, shaping and DWRR, Spanning Tree Protocol, Jumbo frames and more*
Management	SNMP v1/2c/3, SSH, HTTPS, Serial, Radius, Network Time Protocol
Carrier Ethernet functionality	Provider Bridging, MEF9&14, High Efficiency Header Compression, AES 256-bit encryption, MPLS-TP*, OAM*, SyncE, IEEE 1588v2 PTP*
Integrated antenna	0.2m / 8in, 0.3m / 1ft, 0.6m / 2ft
Weight	0.6m / 2ft with mount < 7.5kg / 16.5 lbs 0.3m / 1ft with mount < 7.5kg / 16.5 lbs
Power consumption	20W typical, maximum <35W

* Inquire SAF representative for more information

