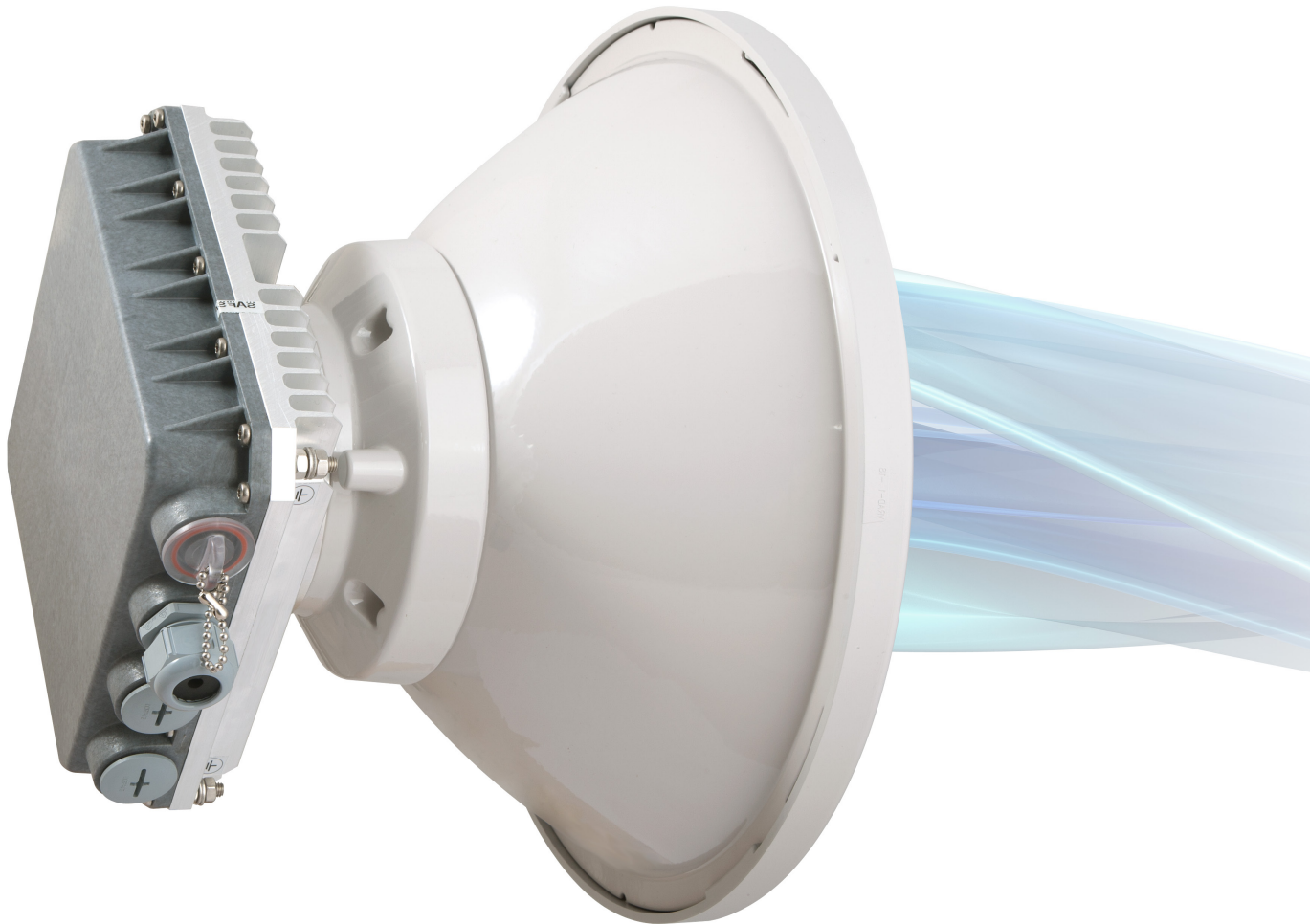




Integra S

carrier-grade microwave radio,
delivering up to 1Gbps Full Duplex



- SAF's most powerful modem yet with 3.5MHz to 60MHz channel bandwidth and up to 1024QAM modulation support for universal network upgrades in a compact, single hardware design
- All-Outdoor radio includes radio, modem, Ethernet network processor and PoE splitter with surge arrestor
- SFP Ports for easy installation – choose single-mode or multi-mode fiber by changing SFP's, add fiber optic cabling later.
- Carefully selected materials for best corrosion resistance and simplified installation make the Integra S 50% lighter than other comparable microwave systems
- Advanced Ethernet network processor features such as AES, Header Compression, OAM, 1588v2 PtP



Integra S is an unbelievably light, energy efficient carrier-grade system that exemplifies an outstanding return on smart engineering - the synergy of high competence in radio electronics and materials science. Slip-fit design allows integration with existing high performance antenna systems or integration with 2+0 aggregation setups for up to 954Mbps Full Duplex capacity without header compression. Gigabit Power over Ethernet (PoE) port defines simple installation, while dual SFP slots allow for fiber optic installation – giving the user ultimate flexibility in cable design.

Capacity	up to 1Gbps throughput with header compression*
Frequency bands	15GHz, 17GHz UL, 18GHz, 23GHz, 24GHz UL, 25GHz, 26GHz, 38GHz, 42GHz and more*
Modulation	4QAM / 16QAM / 32QAM / 64QAM / 128QAM / 256QAM / 512QAM / 1024QAM with Hitless ACM
Configurations	1+0, 2+0 link bonding
Channel bandwidth	
ETSI	from 3.5MHz up to 56MHz, up to 456 Mbps
FCC	from 5MHz up to 60MHz, up to 474 Mbps
Gigabit Ethernet	
1x RJ-45	Electrical with built-in PoE splitter and surge arrestor
2x SFP	Fibre Optics
Service ports	
3.5mm	Audible alignment and RSSI
USB B-Type	Terminal Access
LED	Power On, Link Synchronization, RSL
Managed Gigabit Switch functionality	802.1Q VLANs with QoS including WRED, shaping and DWRR, Spanning Tree Protocol, Jumbo frames and more*
Management	SNMP v1/2c/3, SSH, HTTPS, Serial, Radius, Network Time Protocol
Carrier Ethernet functionality	Provider Bridging, MEF9&14, High Efficiency Header Compression, AES 256-bit encryption*, MPLS-TP*, OAM*, SyncE, IEEE 1588v2 PTP*, Rate limiting per VLAN port, traffic shaping
Performance monitoring	Performance graphs, constellation diagram, alarms, detailed counters
Weight	2.9 kg / 6.4 lbs
Dimensions	235 x 250 x 72 mm / 9.26" x 9.85" x 2.84"
Power consumption	20W typical, maximum <35W

* Inquire SAF Tehnika representative for more information

