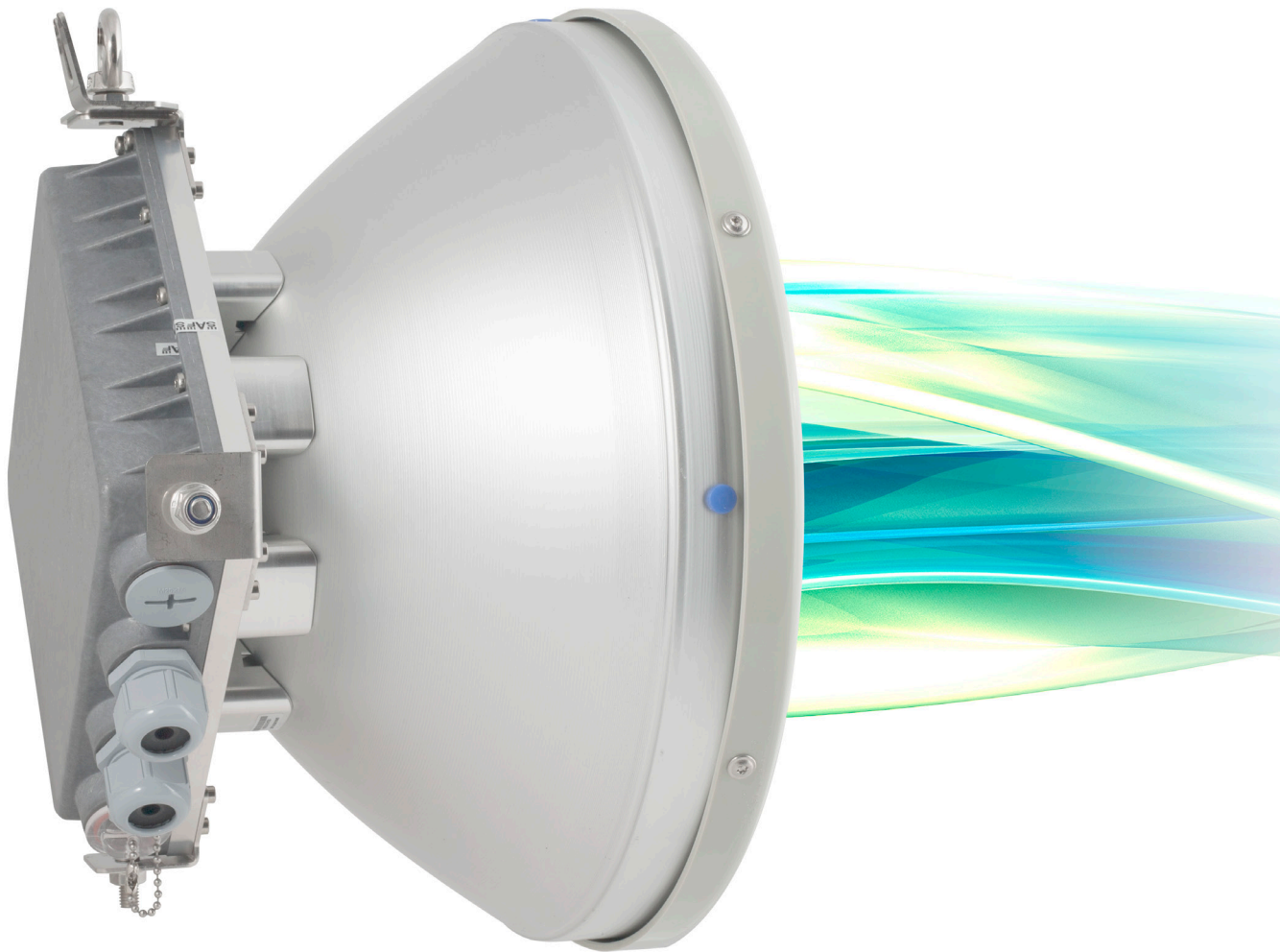




Integra-G

integrated carrier-grade microwave radio,
delivering up to 1Gbps



- SAF Tehnika most powerful modem yet with 3.5MHz to 60MHz channel bandwidth and up to 2048QAM modulation support for universal network upgrades in a compact integrated design.
- Full outdoor unit includes radio, modem, Ethernet network processor, PoE splitter with surge arrester and integrated antenna in a single hardware design.
- Direct radio and antenna integration guarantees weather-proof factory sealing and fast installation.
- Carefully selected materials for best corrosion resistance and simplified installation with a 50% weight reduction compared to other microwave systems.
- Built-in protected 2+0 layer 1 link bonding provides double capacity up to 982 Mbps and up to 1Gbps with HC



Integra-G is an unbelievably light, energy efficient carrier-grade system that exemplifies an outstanding return on smart engineering - the synergy of high competence in radio electronics and materials science. Integration of next generation microwave radio with high and super high performance antennas into a single unit. It translates into a lower total cost of ownership, as well as less time spent on the installation site, and better reliability of the link even in densely served areas.

Capacity	up to 1Gbps with HC
Frequency bands	15GHz, 17GHz UL, 18GHz, 23GHz, 24GHz UL, 25GHz, 26GHz, 28GHz, 32GHz, 38GHz, 42GHz and more*
Modulation	4QAM / 16QAM / 32QAM / 64QAM / 128QAM / 256QAM / 512QAM / 1024QAM / 2048QAM with Hitless ACM
Configurations	1+0, 2+0 link bonding
Channel bandwidth	
ETSI	from 3.5MHz up to 56MHz, up to 472 Mbps
FCC	from 5MHz up to 60MHz, up to 491 Mbps
Gigabit Ethernet	
1x RJx45	Electrical with built-in PoE splitter and surge arrestor
2x SFP	Fibre Optics
Service ports	
3.5mm	Audible alignment and RSSI
USB B-Type	Terminal Access
LED	Power On, Link Synchronization, RSL
Managed Gigabit Switch functionality	802.1Q VLANs with QoS including WRED, shaping and DWRR, Spanning Tree Protocol, Jumbo frames and more*
Management	In-band, SNMP v1/2c/3, SSH, HTTPS, Serial, Radius, Network Time Protocol
Carrier Ethernet functionality	Provider Bridging, MEF9&14, High Efficiency Header Compression, AES 256-bit encryption, MPLS EXP-bit QoS, SyncE
Antenna type	Integrated antenna
Weight	Size 0.3m w/o mount 378x378x227 mm; <5kg Size 0.6m w/o mount 669x669x289 mm; <5kg Size 1ft w/o mount 14.9x14.9x9.0 inch; <11lbs Size 2ft w/o mount 26.3x26.3x11.4 inch; <11lbs
Temperature range	-33 ... +55 °C / -28 ... +130 °F

* Please contact SAF Tehnika representative for more information



For more detailed information about SAF products visit our website www.saftehnika.com or contact your SAF representative. Product features may vary between different models, configuration and all data are subjected to change without prior notice.